



# CALLANDER BAY BOATING HAZARDS

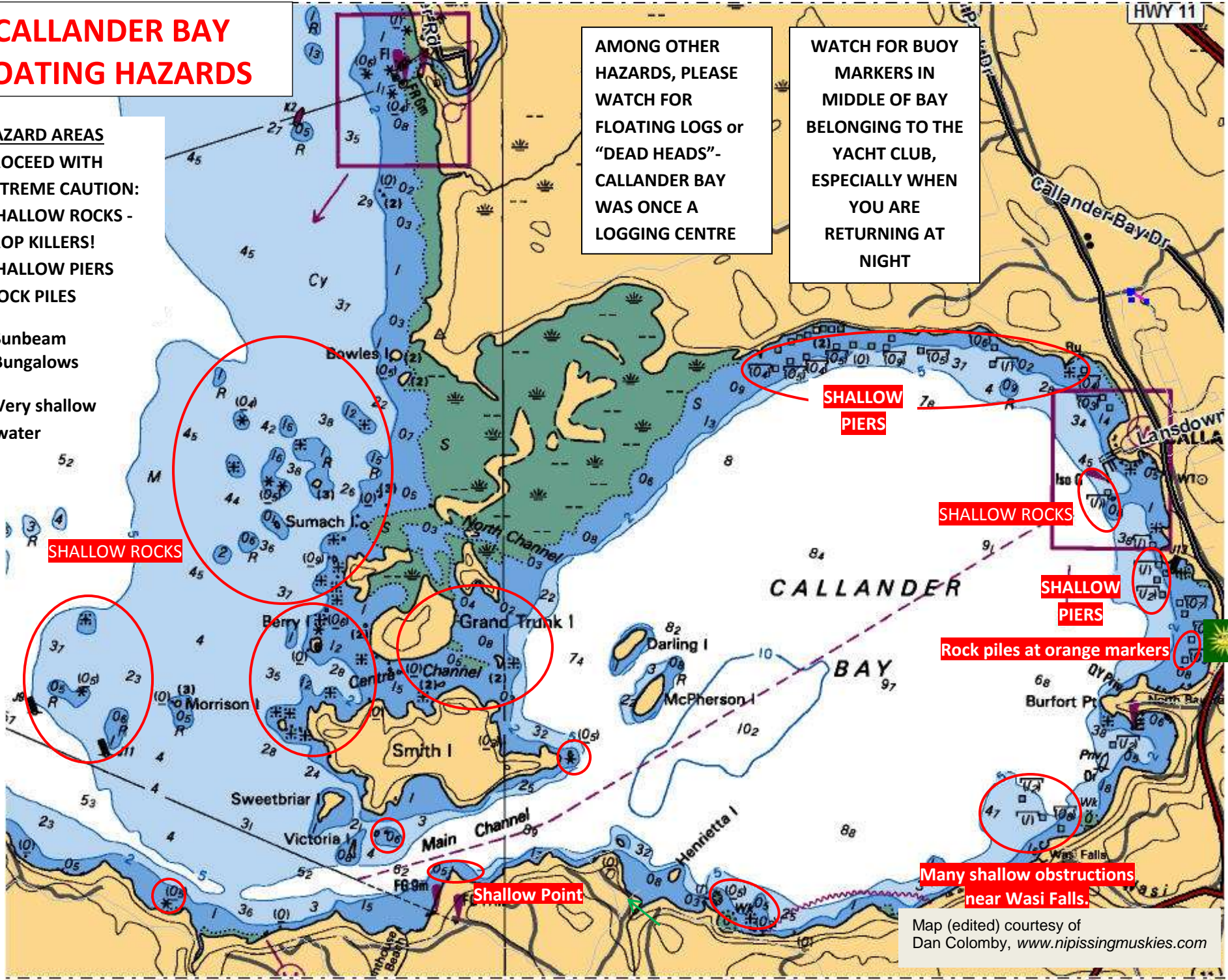
**HAZARD AREAS**  
 PROCEED WITH  
 EXTREME CAUTION:  
 -SHALLOW ROCKS -  
 PROP KILLERS!  
 -SHALLOW PIERS  
 -ROCK PILES

 Sunbeam  
 Bungalows

 Very shallow  
 water

AMONG OTHER  
 HAZARDS, PLEASE  
 WATCH FOR  
 FLOATING LOGS or  
 "DEAD HEADS"-  
 CALLANDER BAY  
 WAS ONCE A  
 LOGGING CENTRE

WATCH FOR BUOY  
 MARKERS IN  
 MIDDLE OF BAY  
 BELONGING TO THE  
 YACHT CLUB,  
 ESPECIALLY WHEN  
 YOU ARE  
 RETURNING AT  
 NIGHT



Map (edited) courtesy of  
 Dan Colomby, [www.nipissingmuskie.com](http://www.nipissingmuskie.com)